

Estacas				
Pilar	Estaca	de estacas	Logradouro	Bloco
P1	Ø20	2	4	2A
P2	Ø20	2	4	2A
P3	Ø20	2	4	2A
P4	Ø20	2	4	2A
P5	Ø20	2	4	2A
P6	Ø20	2	4	2A
P7	Ø20	2	4	2A
P8	Ø20	2	4	2A
P9	Ø20	2	4	2A
P10	Ø20	2	4	2A
P11	Ø20	2	4	2A
P12	Ø20	2	4	2A
P13	Ø20	2	4	2A
P14	Ø20	2	4	2A
P15	Ø20	2	4	2B
P16	Ø20	2	4	2B
P17	Ø20	2	4	2B
P18	Ø20	2	4	2B
P19	Ø20	2	4	2B
P20	Ø20	2	4	2B

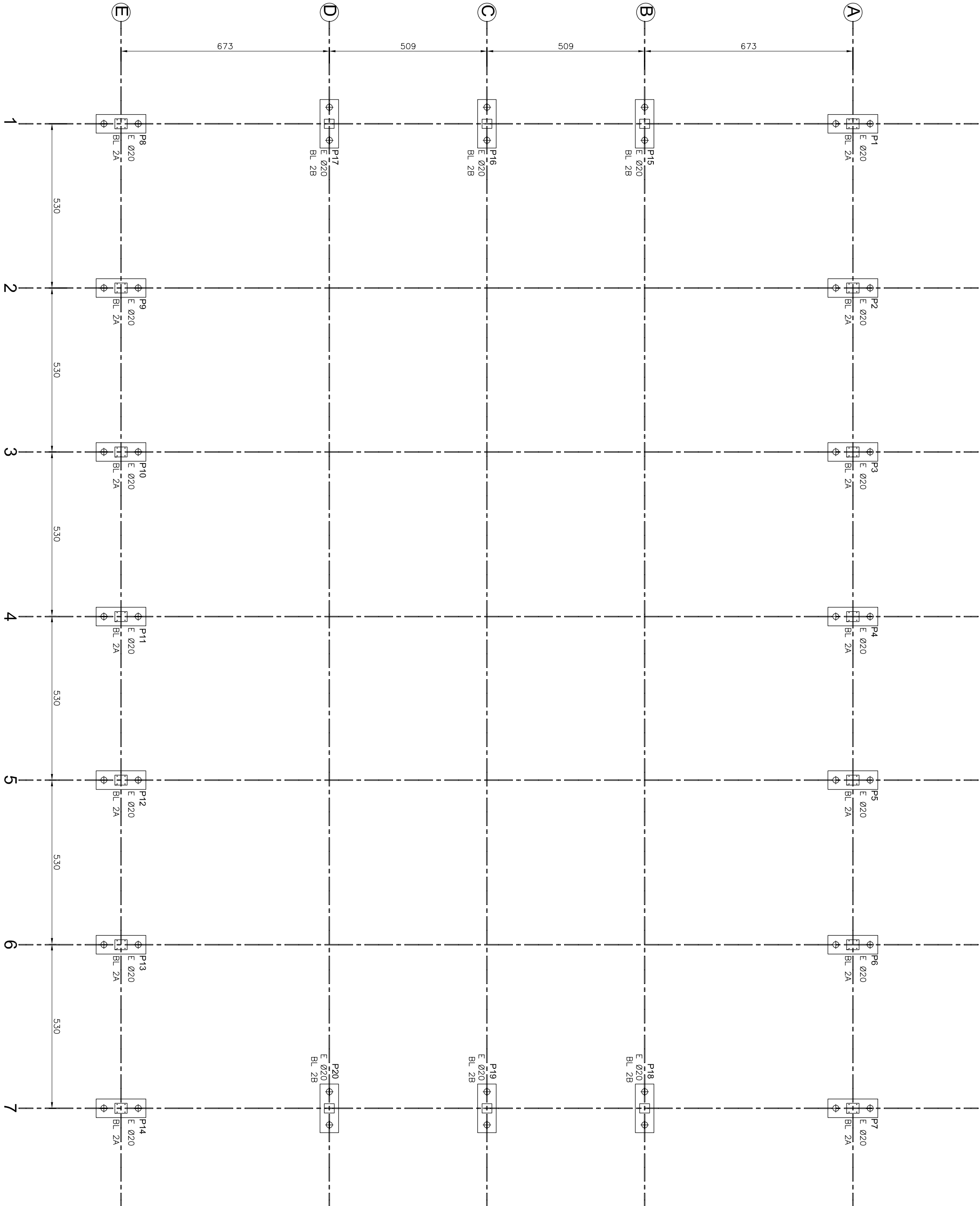
Estacas		
Seção (cm)	Quant.	Compr. (m)
Ø20	40	160

RELAÇÃO DO AÇO					
AÇO	N	DIAM	Q	UNIT	C.TOTAL (cm)
CA50	1	6,3	70	42,4	29680
	2	6,3	360	208	74880
	3	12,5	140	24,3	34020
	4	6,3	56	15,3	8568
	5	6,3	30	4,16	12480
	6	12,5	60	239	14340
	7	6,3	24	149	3576
CA60	22	10,0	160	280	44800
	23	5,0	560	50	28000

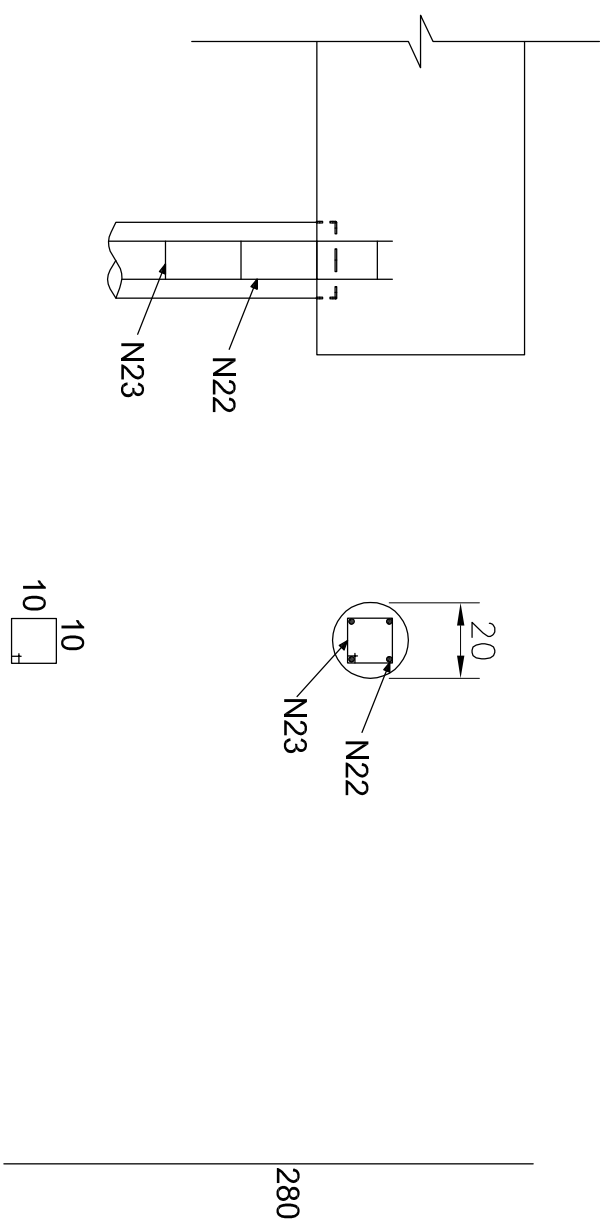
Resumo do aço

AÇO	DIAM	C.TOTAL (m)	PESO (kg)
CA50	6,3	1291,84	34815
	10,0	448,00	307,51
	12,5	485,60	512,28
CA60	5,0	280	47,43
PESO TOTAL		PESO TOTAL	
CA50 1.167,94		CA60 47,43	

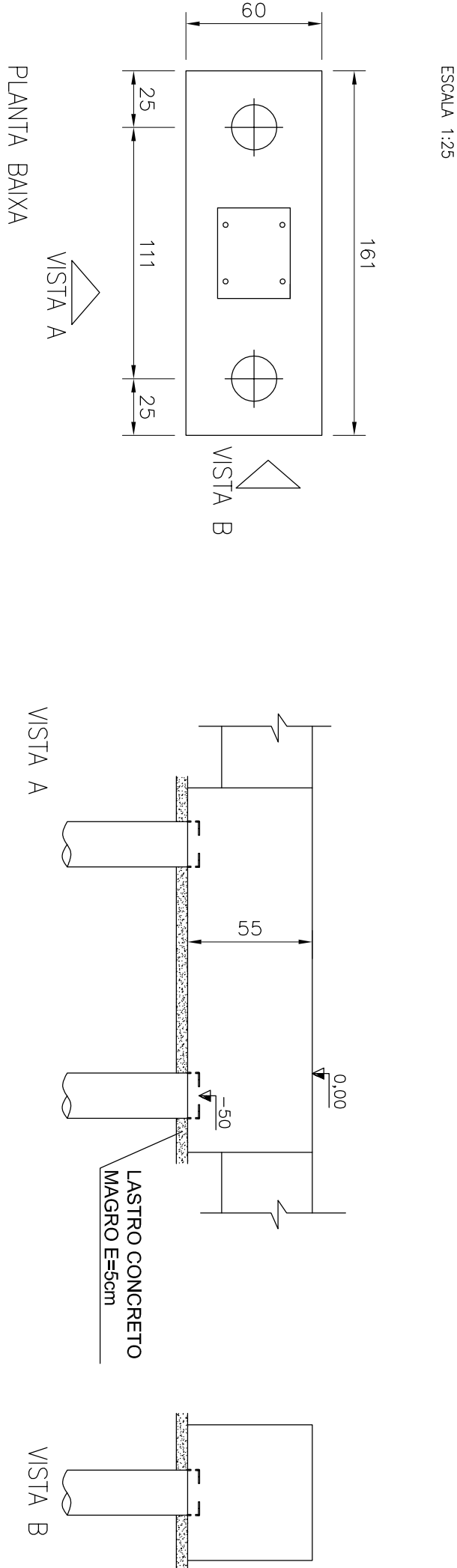
Vol. de concreto dos blocos total (C25) +10% = 11,60 m
Área de forma dos blocos total = 48,36 m
Vol. de concreto das estacas (C25) +10% = 5,53 m



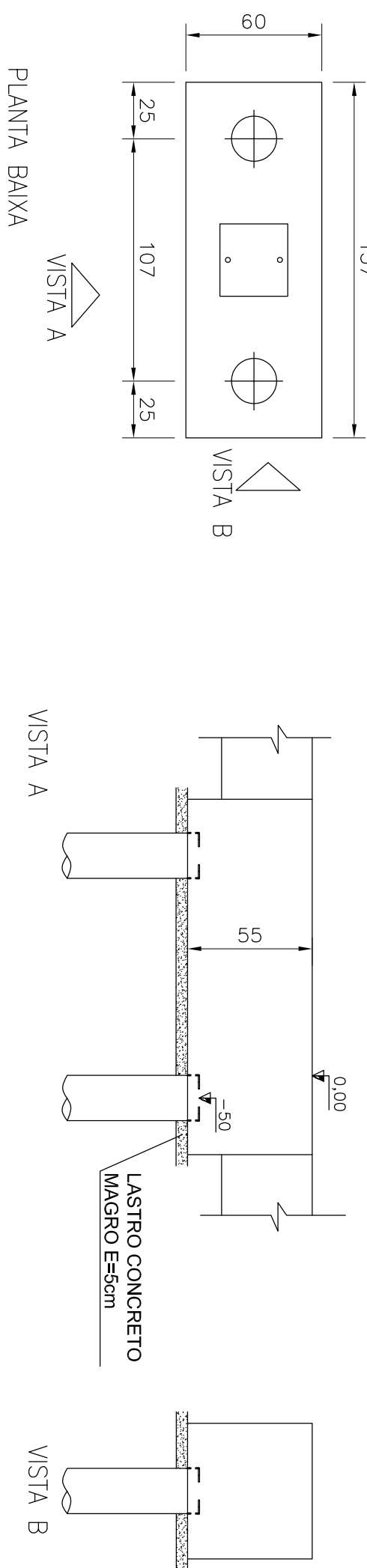
DETALHAMENTO ARMADURA DAS ESTACAS



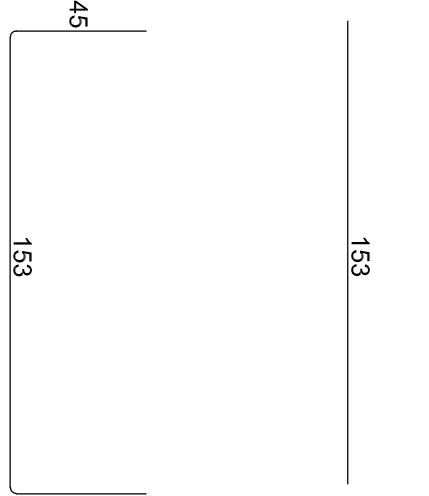
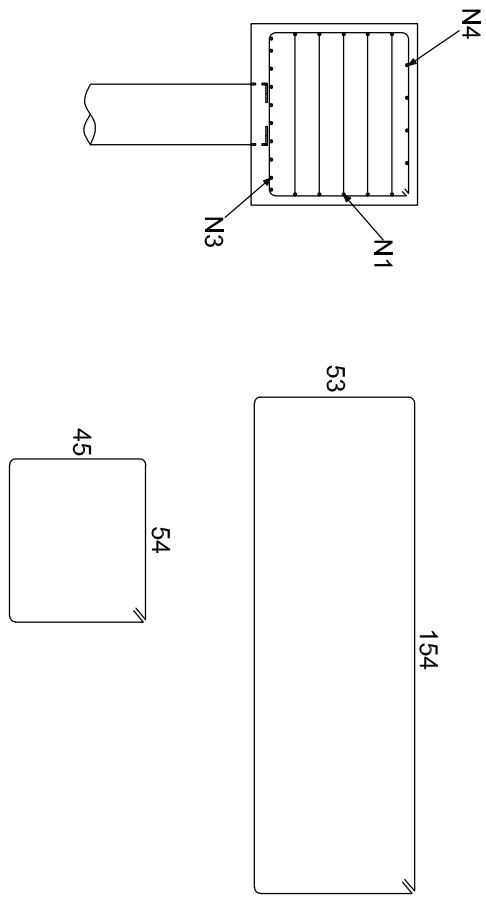
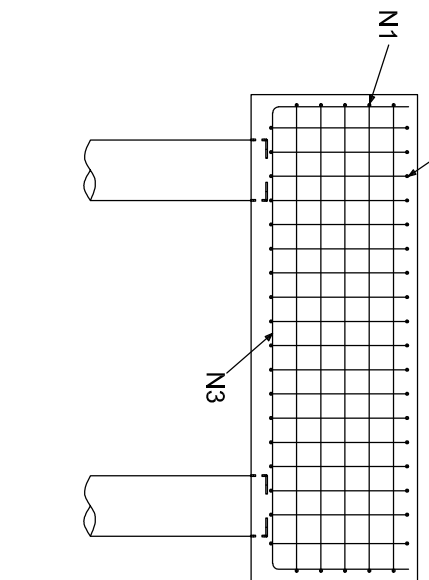
ESCALA 1:100



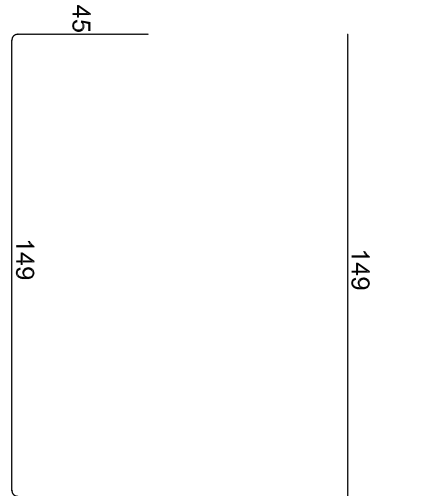
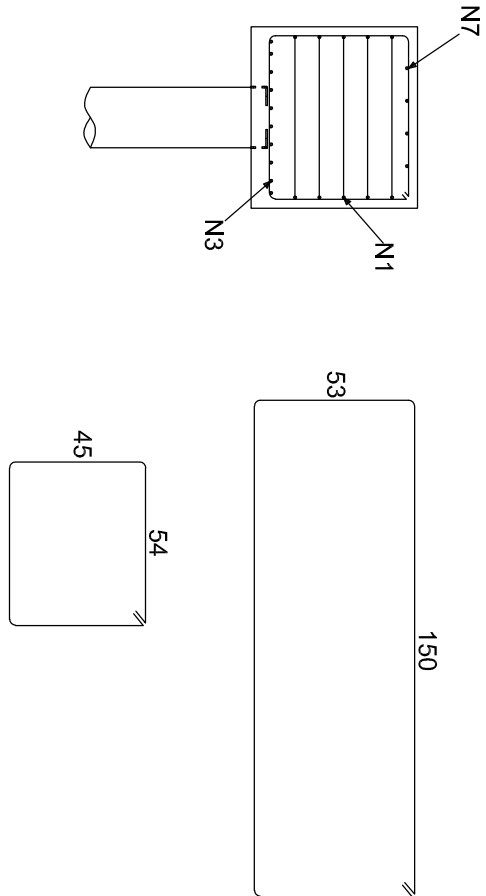
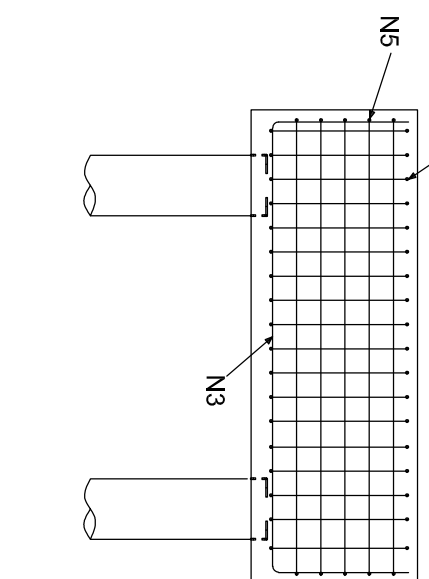
ESCALA 1:25



DETALHAMENTO ARMADURA



DETALHAMENTO ARMADURA



PROJETO ARQUITETÔNICO PARA A EXECUÇÃO DE QUADRA POLIESPORTIVA
COBERTA, ACESSIBILIDADE E MINI QUADRA DE AREIA NA ESCOLA MUNICIPAL
LEONOR DE MOURA CARVALHO.

ESTRUTURAL

PRANCHA
07/07

PROPRIETÁRIO: Prefeitura Municipal de Contenda - PR
AUTOR DO PROJETO: Arq. Priscila Piel
CAU 191700-5

RESPONSÁVEL TÉCNICO: Arq. Priscila Piel
CAU 191700-5

D A T A: JANEIRO/19
DESENHO: Priscila P.
Centro - Contenda/PR
QUADRA E.M.L.M.C.
Telefone: (041) 3623 1212